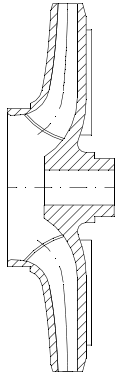


**Girante chiusa - Closed Impeller**


Pompe centrifughe a girante chiusa adatte al convogliamento di liquidi limpidi o contenenti una piccola percentuale di solidi in sospensione.

*Centrifugal pump with closed impeller suitable to convey clean liquids or containing a small percentage of solid materials in suspensions.*

**RDV**

Portata : fino a 320 m<sup>3</sup>/h  
 Prevalenza : fino a 95 mcl  
 Materiali : standard 316 - CF8M  
 : a richiesta Hastelloy, Durimet, Monel  
*Capacity : up to 320 m<sup>3</sup>/h*  
*Total head : up to 95 mwc*  
 Materials : 316 - CF8M  
 on request Hastelloy, Durimet, Monel

**RNV**

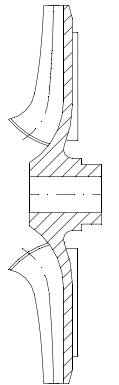
Portata : fino a 390 m<sup>3</sup>/h  
 Prevalenza : fino a 90mcl  
 Materiali : standard Ghisa G250  
*Capacity : up to 390 m<sup>3</sup>/h*  
*Total head : up to 90 mwc*  
 Materials : Cast iron G250

**RDV**

Sezione : pag. 4  
 Ingombro : " 12

**RNV**

Sezione : pag. 4  
 Ingombro : " 14

**Girante Aperta - Open Impeller**


Pompe centrifughe a girante aperta adatte al convogliamento di liquidi contenenti solidi in sospensione non filamentosi.

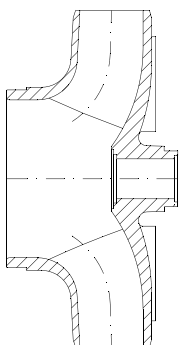
*Centrifugal pump with open impeller suitable to convey liquids containing solid materials (lint free) in suspensions.*

**RGV**

Portata : fino a 320 m<sup>3</sup>/h  
 Prevalenza : fino a 95 mcl  
 Materiali : standard 316 - CF8M  
 : a richiesta Hastelloy, Durimet, Monel  
*Capacity : up to 320 m<sup>3</sup>/h*  
*Total head : up to 95 mwc*  
 Materials : 316 - CF8M  
 on request Hastelloy, Durimet, Monel

**RGV**

Sezione : pag. 6  
 Ingombro : " 12

**Girante a Canale - Channel Impeller**


Pompe centrifughe con girante a canali adatte al convogliamento di liquidi sporchi contenenti solidi in sospensione non filamentosi.

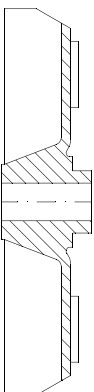
*Centrifugal pump with channel impeller suitable to convey dirty liquids containing suspended foreign bodies without lints.*

**RBV**

Portata : fino a 500 m<sup>3</sup>/h  
 Prevalenza : fino a 36 mcl  
 Materiali : standard Ghisa G250 - 316 - CF8M  
 : a richiesta Hastelloy, Durimet, Monel  
*Capacity : up to 500 m<sup>3</sup>/h*  
*Total head : up to 36 mwc*  
 Materials : 316 - CF8M  
 on request Hastelloy, Durimet, Monel

**RBV**

Sezione : pag. 8  
 Ingombro : " 16

**Girante Vortex - Vortex Impeller**


Pompe centrifughe con girante disposta in posizione arretrata nel corpo. La maggior parte del prodotto attraversa la pompa senza interessare la girante; pertanto è possibile il pompaggio di qualsiasi liquido senza l'intasamento della pompa.

*Centrifugal pump with a special shaped impeller placed in the back side of the casing. Most of the liquid flow through the pump without touching the impeller directly. For this reason is possible to convey every liquids without the clogging the pump.*

**RCV**

Portata : fino a 200 m<sup>3</sup>/h  
 Prevalenza : fino a 60 mcl  
 Materiali : standard Ghisa G250 - 316 - CF8M  
 : a richiesta Hastelloy, Durimet, Monel  
*Capacity : up to 200 m<sup>3</sup>/h*  
*Total head : up to 60 mwc*  
 Materials : 316 - CF8M  
 on request Hastelloy, Durimet, Monel

**RCV**

Sezione : pag. 10  
 Ingombro : " 16