



**SALVATORE
ROBUSCHI
POMPE PARMA**

RNM, RNMD

n = 2900 1/min

**ELETTROPOMPE
CENTRIFUGHE
MONOBLOCCO**

CON BOCCHIE FILETTATE
WITH SCREWED CONNECTIONS

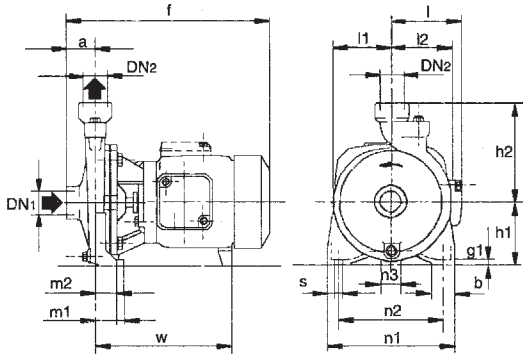


Fig. 1

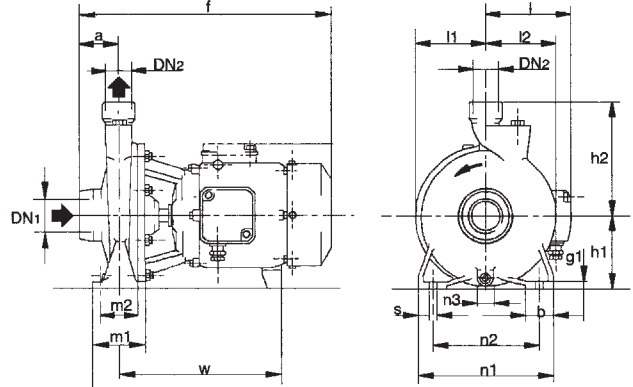


Fig. 2

Figura Picture	RNM RNMD	mm																		Peso Weight kg
		DN ₁	DN ₂	a	f	h ₁	h ₂	m ₁	m ₂	n ₁	n ₂	n ₃	b	s	l	l ₁	l ₂	w	g ₁	
1	RNM 1/A	G1	G1	40	300	80	132	40	32	170	140	9	35	9,5	105	77	81	218	10	11,8
	RNM 2/A-S-B	G1	G1	45	305	95	150	40	32	190	160	9	35	9,5	105	87	90	218	10	17-16-16
	RNM 3/A-B-C	G1	G1	50	355	112	180	55	43	245	205	37	45	11,5	-	110	113	224	12	26-26-25
2	RNMD 20/110A-Z-B	G1 1/4	G3/4	75	345	95	132	75	55	170	130	9	38	9,5	105	93	93	229	10	17-18-15
	RNMD 20/140A-B	G1 1/4	G3/4	80	390	112	150	75	55	200	160	37	38	9,5	-	110	116	236	10	26-25
	RNM 20/125A	G1 1/4	G3/4	50	310	90	132	75	55	170	130	9	38	9,5	105	85	85	218	10	14,7
	RNM 20/160A-B	G1 1/4	G3/4	53	355	100	150	75	55	190	150	30	38	9,5	-	102	102	226	10	22-20,6
	RNM 25/125A-B	G1 1/2	G1	56	360	90	140	75	55	170	130	9	38	9,5	-	85	88	230	10	19-18
	RNM 25/160A-B	G1 1/2	G1	56	360	100	160	75	55	190	150	30	38	9,5	-	102	102	226	10	22,5-22
	RNM 25/200B	G1 1/2	G1	63	380	125	180	90	65	245	200	49	45	11,5	-	125	125	227	11	28
	RNM 25/200A				420							42			140			272		36
	RNMD 25/190C				425							50			-			252		37,5
	RNMD 25/190B	G1 1/2	G1	97	465	140	180	100	70	240	190	49	50	14	140	133	133	286	13	44
	RNMD 25/190A				475							49			140			286		49
	1	RNM 10/S-A-D-F	G2	G1 1/4	63	360	100	150	50	35	190	140	30	50	13	-	90	97	217	14
RNM 11/A-B		G2	G1 1/4	70	380	112	170	50	35	210	160	37	50	15	-	103	110	225	14	26-25
RNM 12/D					380							47						225		29,5
RNM 12/C		G2	G1 1/4	70	435	132	190	50	35	240	190	45	50	15	140	125	127	280	14	37
RNM 12/A					445							45			140			280		41
RNM 17/H					395							37			-			235		24
RNM 17/G					395							37			-			235		30
RNM 17/F		G2 1/2	G2 1/2	80	395	112	160	50	35	210	160	37	50	14	-	96	113	235	14	25
RNM 17/D					445							20			140			275		31

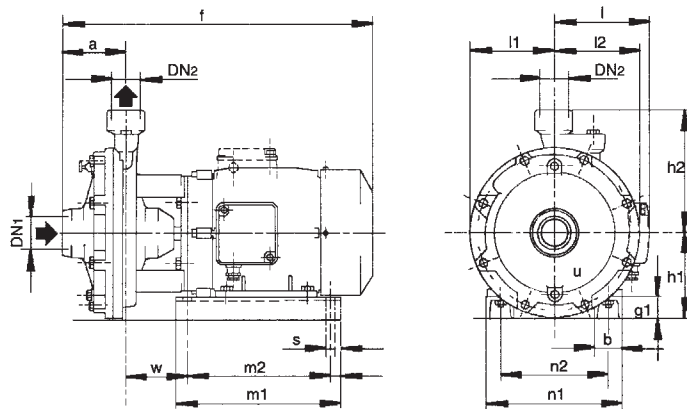


Fig. 3

Figura Picture	RNMD	mm																	Peso Weight kg	
		DN ₁	DN ₂	a	f	h ₁	h ₂	m ₁	m ₂	n ₁	n ₂	z	b	s	l	l ₁	l ₂	w		g ₁
3	RNMD 32/210D				505	155		205	175	182	140		42	10	140			139	5	59
	RNMD 32/210B-C	G2	G1 1/4	110	550	162	215	280	250	240	190	15	50	12	170	150	150	108	38	75-69
	RNMD 32/210A				625	170		298	268	266	216		50	12	-			152	38	95
	RNMD 40/180D				510	155		205	175	182	140		42	10	140			133	5	57
	RNMD 40/180B-C	G2	G1 1/2	121	555	162	215	280	250	240	190	15	50	12	170	145	145	102	38	74-68
	RNMD 40/180A				630	170		298	268	266	216		50	12	-			145	38	96

RNM

n = 2900 1/min

CLOSE COUPLED CENTRIFUGAL PUMPS

Data : 1-02-94

N. : T-1012

CON BOCCHIE FLANGIATE WITH FLANGED CONNECTIONS

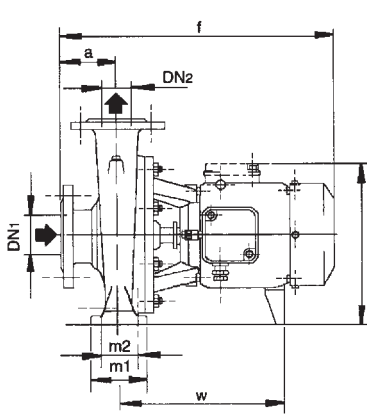


Fig. 4

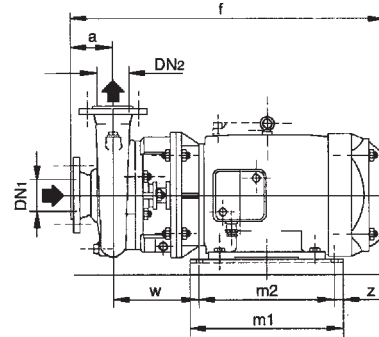
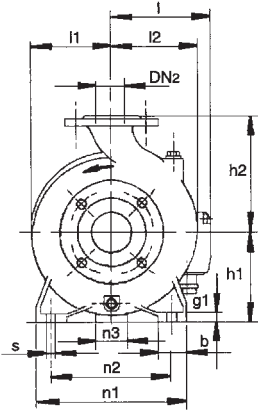
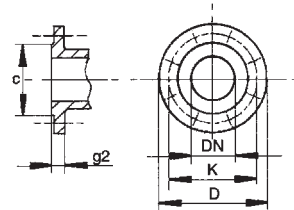
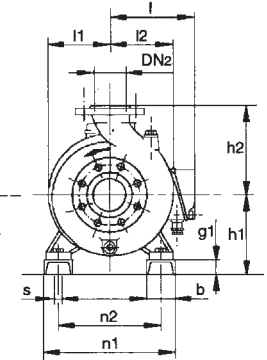


Fig. 5



mm							
DN	C	K	D	Fori Holes		g2	
				N°	Ø		
32	78	100	140	4	18	18	
40	88	110	150	4	18	18	
50	102	125	165	4	18	20	
65	122	145	185	4	18	20	
80	138	160	200	4	18	22	
100	158	180	220	8	18	24	
125	188	210	250	8	18	24	

Figura Picture	RNM	mm																			Peso Weight kg
		DN1	DN2	a	f	h1	h2	m1	m2	n1	n2	n3	z	b	s	l	l1	l2	w	g1	
4	RNM 32/12S-A-D-F	50	32	80	385	112	140	100	70	190	140	37	-	50	14	-	93	97	225	12	31-32-31-29
	RNM 32/16A-B	50	32	80	390	132	160	100	70	240	190	47	-	50	14	-	120	230	12	39-38	
	RNM 32/20D				390							62							230		43
	RNM 32/20C	50	32	80	440	160	180	100	70	240	190	60	-	50	14	140	140	140	275	12	50
	RNM 32/20A				450							60				140			275		53
	RNM 40/12A-C-F	65	40	80	390	112	140	100	70	210	160	37	-	50	14	-	100	113	230	12	35-34-35
	RNM 40/16C				390							47							230		40
	RNM 40/16B	65	40	80	440	132	160	100	70	240	190	45	-	50	14	140	119	119	275	12	48
	RNM 40/16A				450							45				140			275		51
	RNM 40/20C	65	40	100	470	160	180	100	70	265	212	60	-	50	14	140	140	140	275	12	56
	RNM 40/20A-AR-B				525							49				170			320		74-68-68
	RNM 40/25B-C	65	40	100	640	180	225	125	95	320	250	50	-	65	14	-	175	175	410	15	116-115
RNM 40/25A				690							460							460		132	
RNM 50/12F				410							47							230		42	
RNM 50/12D	65	50	100	460	132	160	100	70	240	190	45	-	50	14	140	121	137	275	12	49	
RNM 52/12A				470							45				140			275		55	
RNM 50/16A-B	65	50	100	525	160	180	100	70	265	212	49	-	50	14	170	127	141	320	14	73-67	
RNM 50/20A-B	65	50	100	640	160	200	100	70	265	212	40	-	50	14	-	140	153	410	15	108-100	
RNM 50M/E	65	50	100	700	192	225	298	258	260	216	-	20	5	12	-	175	175	239	60	135	
RNM 50M/C-D				750																166-138	
RNM 50/25C	65	50	100	645	180	225	125	95	320	250	50	-	65	14	-	175	175	415	15	119	
RNM 50/25A-B				695							465							465		145-135	
RNM 65/12E				470							60				140			275		60	
RNM 65/12A-C	80	65	100	525	160	180	125	95	280	212	49	-	65	14	170	134	156	320	15	77-71	
RNM 65/16D-E				525							49				170			320		79-73	
RNM 65/16B-C	80	65	100	640	160	200	125	95	280	212	40	-	65	14	-	150	172	410	15	108-102	
RNM 65/16A				690							40							460		124	
RNM 65/20B-C	80	65	100	690	180	225	125	95	320	250	50	-	65	14	-	155	175	460	15	156-138	
RNM 65/200A	80	65	100	820	202	225	400	360	320	254	-	20	65	14	250	155	175	245	42	195	
RNM 65/250C				820							20		65	14	250			245		208	
RNM 65/250B	80	65	100	840	222	250	387	347	344	279	-	20	65	14	270	175	190	258	42	270	
RNM 65/250A				945							25		60	18	290			263	45	339	
RNM 80/16E				545							60				170			320		89	
RNM 80/16C-D	100	80	125	670	180	225	125	95	320	250	50	-	65	14	-	165	193	415	15	117-113	
RNM 80/16A-B				720							50							465		143-133	
RNM 80/200B	100	80	125	845	202	250	400	360	320	254	-	20	65	14	250	170	194	245	42	208	
RNM 80/200A				865							387				270			258		266	
RNM 80/250E				845							20		65	14	250			245		213	
RNM 80/250D	100	80	125	865	222	280	387	347	344	279	-	20	65	14	270	191	210	258	42	278	
RNM 80/250A-B-C				970							25		80	18	290			263	45	400-395-347	
RNM 100/200E				775							298				12			239		175	
RNM 100/200D				845							400				5	14	250	245		208	
RNM 100/200C	125	100	125	865	222	280	387	347	344	279	-	20	65	14	270	180	212	258	42	274	
RNM 100/200A-B				970							475				80	18	290	263	45	390-343	
RNM 100/250B	125	100	140	980	245	280	475	425	398	318	-	25	80	18	290	205	233	263	45	413	
RNM 100/250A				1050							480				100			305		509	

IMGOMBRI

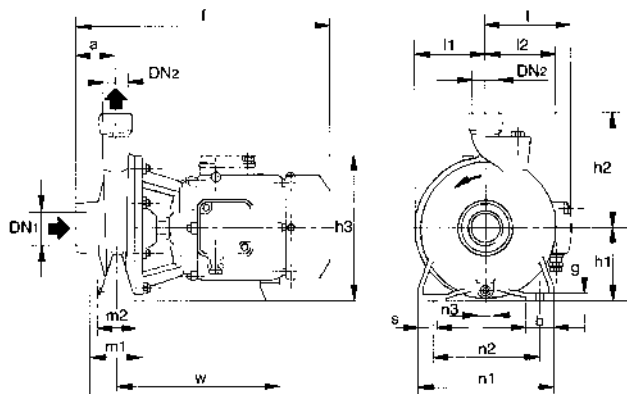


Fig. 1

Esecuzione normale
Standard construction

Figura Picture	RNM4	DN1	DN2	mm																kg	
				a	f	h1	h2	h3	m1	m2	n1	n2	n3	b	s	t	l1	l2	w		g
1	RNM4 25/125A	G1 1/2	G1	56	320	90	140	-	75	55	170	130	9	38	9.5	105	85	88	219	10	13.5
	RNM4 25/160A-B			56	360	100	160	210	75	55	190	150	30	38	9.5	-	102	102	229	10	17.5
	RNM4 25/200A-B-C			63	365	125	180	235	90	65	245	200	49	45	11.5	-	125	125	229	11	25-23-21.5

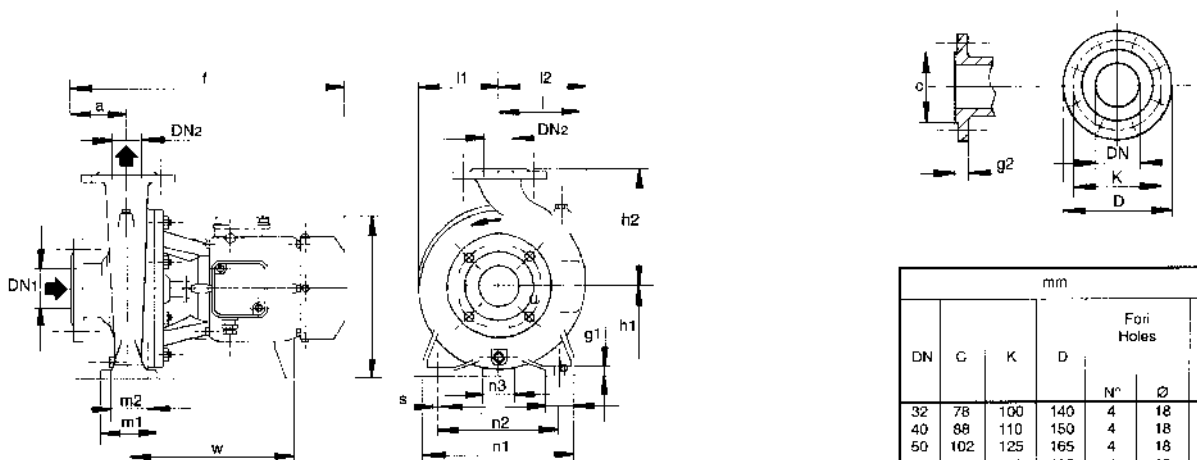


Fig. 4

DN	C	K	D	Fori Holes		g2
				N°	Ø	
32	78	100	140	4	18	18
40	88	110	150	4	18	18
50	102	125	165	4	18	20
65	122	145	185	4	18	20
80	136	160	200	4	18	22

Figura Picture	RNM4	DN1	DN2	mm																Peso Weight kg		
				a	f	h1	h2	h3	m1	m2	n1	n2	n3	z	b	s	l	l1	l2		w	g1
4	RNM4 32/16A-B	50	32	80	390	132	180	242	100	70	240	190	47	-	50	14	-	120	120	235	12	29-29
	RNM4 32/20A-B	50	32	80	390	160	180	270	100	70	240	190	62	-	50	14	-	140	140	235	12	36-34.5
	RNM4 40/16A-B-C	65	40	80	390	132	160	242	100	70	240	190	47	-	50	14	-	119	119	235	12	34-32-30.5
	RNM4 40/20A-B	65	40	100	410	160	180	270	100	70	265	212	62	-	50	14	-	140	140	235	12	40.5-40.5
	RNM4 40/25B-C	65	40	100	460	180	225	-	125	95	320	250	60	-	65	14	140	175	175	280	15	64-60
	525				330												77					
	RNM4 40/25A	65	50	100	410	160	180	270	100	70	265	212	62	-	50	14	-	127	141	235	12	40-40
	RNM4 50/16A-B				420												245			44.5		
	RNM4 50/20C	65	50	100	470	160	200	270	100	70	265	212	60	-	50	14	140	140	153	290	14	54.5-52.5
	RNM4 50/20A-B				470												290			54.5-52.5		
	RNM4 50/25C	65	50	100	460	180	225	-	125	95	320	250	60	-	65	14	140	175	175	280	15	64.5
	RNM4 50/25A-B				525												330			83.5-77.5		
	RNM4 65/16B-C	80	65	100	410	160	200	270	125	95	280	212	62	-	65	14	-	150	172	235	15	46-46
	RNM4 65/16A				460												280			50.5		
	RNM4 65/20B	80	65	100	470	180	225	-	125	95	320	250	60	-	65	14	140	155	175	290	15	58
	RNM4 65/20A				525												330			71		
RNM4 65/25B	80	65	100	540	200	250	-	160	120	360	280	60	-	80	18	170	175	190	345	18	95	
RNM4 65/25A				645												415			119			
RNM4 65/31B-C	80	65	125	670	225	280	410	160	120	400	315	75	-	80	18	-	220	220	415	20	164-152	
RNM4 65/31A				720												465			175			

RNM4

n = 1450 1/min

CLOSE COUPLED CENTRIFUGAL PUMPS

Data : 1-02-94

N. : T-1010

OVERALL DIMENSIONS

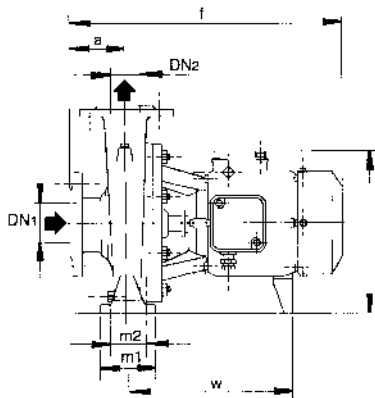


Fig. 4

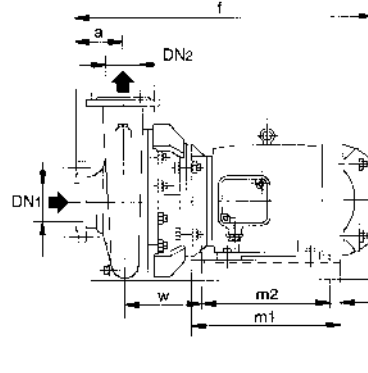
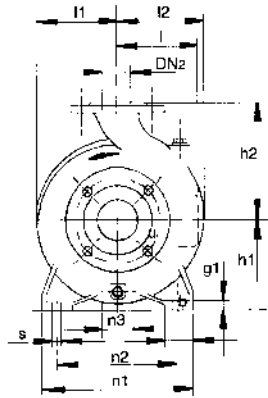
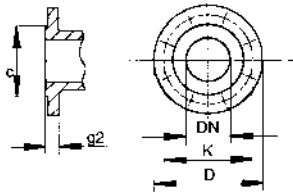
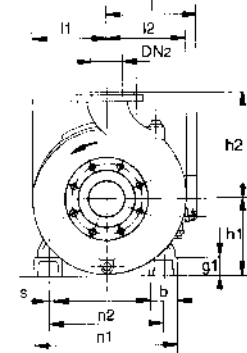


Fig. 5



mm						
DN	C	K	D	For Holes		g2
				N°	Ø	
80	138	160	200	4	18	22
80*	138	160	200	8	18	22
100	158	180	220	8	18	24
125	188	210	250	8	18	24
150	212	240	285	8	22	26
200	268	295	340	8	22	30

Figura Picture	RNM4	mm																			Peso Weight		
		DN1	DN2	a	f	h1	h2	h3	m1	m2	n1	n2	n3	z	b	s	l	l1	l2	w	g1	kg	
4	RNM4 80/16C	100	80	125	435	180	225	290	125	95	320	250	82	-	65	14	-	165	193	235	15	56	
	RNM4 80/16A-B				485								60			170				280		64-62	
	RNM4 80/20C	100	80	125	505	180	250	-	125	95	345	280	60	-	65	14	-	170	194	300	15	70	
	RNM4 80/20A-B				560											170				340		89-83	
	RNM4 80/25C	100	80	125	565	200	280	385	160	120	400	315	60	-	80	18	165	-	191	210	335	20	103
RNM4 80/25A-B				670											18				415		137-128		
RNM4 80/31 C	100	80	125	720	250	315	435	160	120	400	315	90	-	80	18	-	220	232	465	20	178		
5	RNM4 80/315B	100	80	125	800	260	315	-	391	351	310	254	-	20	50	14	250	220	232	210	100	256	
	RNM4 80/315A				845				435	395	310									210		276	
	RNM4 80/400C	125	80*	125	865	270	355	-	480	397	350	279	-	25	70	14	270	268	268	216	70	350	
RNM4 80/400B				905				520	435	350	279								216		368		
RNM4 80/400A				970				540	455	400	318								233		436		
4	RNM4 100/205B-C	125	100	125	565	200	280	-	160	120	360	280	80	-	80	18	165	-	180	212	330	20	98-92
	RNM4 100/20A				665			385												410		122	
	RNM4 100/25B	125	100	140	685	225	280	410	160	120	400	315	75	-	80	18	-	205	233	415	20	146	
RNM4 100/25A				735															465		157		
5	RNM4 100/315C	125	100	140	815	280	315	-	391	351	310	254	-	20	50	14	250	230	250	210	100	255	
	RNM4 100/315B				860				435	395	310									210		275	
	RNM4 100/315A				880				432	382	350	279								223		324	
	RNM4 100/400C	125	100	140	920	300	355	-	514	429	350	279	-	25	50	14	270	268	280	221	100	370	
RNM4 100/400A-B				980				540	455	400	318								233		454-448		
4	RNM4 125/250E	150	125	140	685	250	355	435	160	120	400	315	90	-	80	18	-	235	268	415	20	165-156	
	RNM4 125/25C				735															465		176	
	RNM4 125/250B	150	125	140	815	260	355	-	391	351	319	254	-	20	65	14	250	235	268	210	100	239	
RNM4 125/250A				860				435	395	319										210		260	
5	RNM4 125/315C	150	125	140	880	270	355	-	482	397	350	279	-	25	70	14	270	247	278	216	70	350	
	RNM4 125/315B				920				520	395	350	279								216		380	
	RNM4 125/315A				980				540	455	395	318								233		440	
	RNM4 125/400C	150	125	140	980	300	400	-	540	455	400	318	-	25	80	18	290	280	305	233	80	465	
	RNM4 125/400A-B				1045				540	461	455	356								274	50	580-557	
	RNM4 150/315D	200	150	160	900	300	400	-	435	395	350	300	-	20	50	14	270	260	298	229	100	354	
	RNM4 150/315C				940				435	395	350	300								248		398	
RNM4 150/315A-B				1000				540	455	395	318								233	70	472		
RNM4 150/400B-C	200	150	160	1065	325	450	-	540	461	455	356	-	25	100	18	330	295	328	274	50	689-584		
RNM4 150/400A				1145				625	535	505	405								290		713		