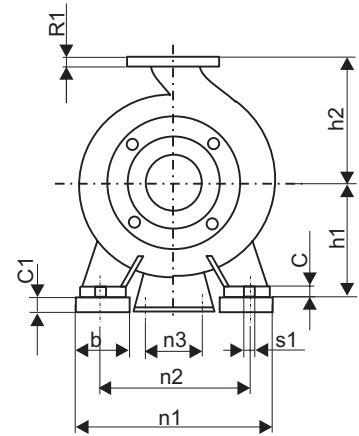
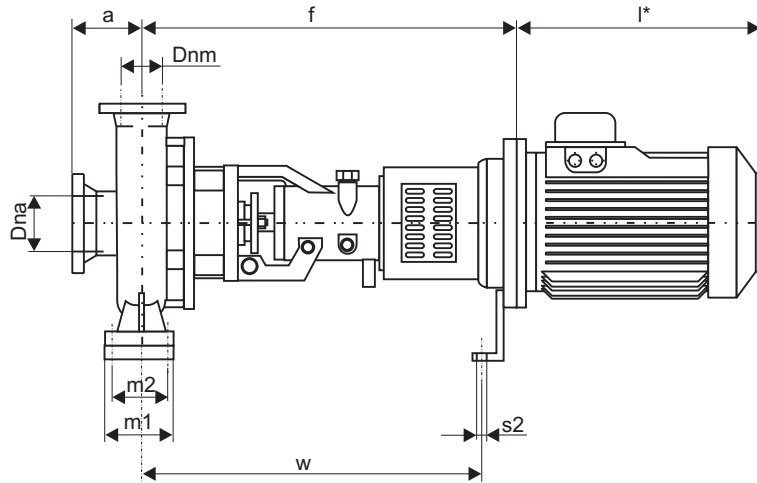


Pompa Tipo	Motore Grand.	Pompa						Piedi - Dimensioni in mm.											Peso Kg	
		DNa	DNm	a	f	h1	h2	b	m1	m2	n1	n2	n3	w	c	c1	s1	s2		l*
32-125	80	50	32	80	422	112	140	50	100	70	190	140	110	379	14	-	14	14	272	48
	90	"	"	"	422	"	"	"	"	"	"	"	"	"	"	-	"	"	320	52
	100	"	"	"	447	"	"	"	"	"	"	"	"	"	"	25	"	"	358	62
32-160	80	50	32	80	442	132	160	50	100	70	240	190	110	379	14	-	14	14	272	55
	90	"	"	"	422	"	"	"	"	"	"	"	"	"	"	-	"	"	320	62
	100	"	"	"	447	"	"	"	"	"	"	"	"	"	"	-	"	"	358	73
	112	"	"	"	447	"	"	"	"	"	"	"	"	"	"	-	"	"	372	80
32-200	80	50	32	80	422	160	180	50	100	70	240	190	110	379	14	-	14	14	272	62
	90	"	"	"	422	"	"	"	"	"	"	"	"	"	"	"	"	"	320	66
	100	"	"	"	447	"	"	"	"	"	"	"	"	"	"	"	"	"	358	80
	112	"	"	"	447	"	"	"	"	"	"	"	"	"	"	"	"	"	372	87
	132	"	"	"	467	"	"	"	"	"	"	"	190	419	"	25	"	"	461	109
40-125	80	65	40	80	422	112	140	50	100	70	210	160	110	379	14	-	14	14	272	51
	90	"	"	"	422	"	"	"	"	"	"	"	"	"	"	"	"	"	320	55
	100	"	"	"	447	"	"	"	"	"	"	"	"	"	25	"	"	358	69	
40-160	80	65	40	80	422	132	160	50	100	70	240	190	110	379	14	-	14	14	272	57
	90	"	"	"	422	"	"	"	"	"	"	"	"	"	"	"	"	"	320	61
	100	"	"	"	447	"	"	"	"	"	"	"	"	"	"	"	"	"	358	75
	112	"	"	"	447	"	"	"	"	"	"	"	"	"	"	"	"	"	372	82
	132	"	"	"	467	"	"	"	"	"	"	"	190	419	"	25	"	"	461	104
40-200	90	65	40	100	422	160	180	50	100	70	265	212	110	379	14	-	14	14	320	70
	100	"	"	"	447	"	"	"	"	"	"	"	"	"	"	"	"	"	358	84
	112	"	"	"	447	"	"	"	"	"	"	"	"	"	"	"	"	"	372	91
	132	"	"	"	467	"	"	"	"	"	"	"	190	419	"	"	"	"	461	113
40-250	90	65	40	100	422	180	225	65	125	95	320	250	110	379	14	-	14	14	320	83
	100	"	"	"	447	"	"	"	"	"	"	"	"	"	"	"	"	"	358	97
	112	"	"	"	447	"	"	"	"	"	"	"	"	"	"	"	"	"	372	104
	132	"	"	"	467	"	"	"	"	"	"	"	190	419	"	"	"	"	461	126
50-125	80	65	50	100	422	132	160	50	100	70	240	190	110	379	14	-	14	14	272	61
	90	"	"	"	447	"	"	"	"	"	"	"	"	"	"	"	"	"	320	69
	100	"	"	"	447	"	"	"	"	"	"	"	"	"	"	"	"	"	358	79
	112	"	"	"	467	"	"	"	"	"	"	"	"	"	"	"	"	"	372	86
50-160	90	65	50	100	422	160	180	50	100	70	265	212	110	379	14	-	14	14	320	67
	100	"	"	"	447	"	"	"	"	"	"	"	"	"	"	"	"	"	358	81
	112	"	"	"	447	"	"	"	"	"	"	"	"	"	"	"	"	"	372	88
	132	"	"	"	467	"	"	"	"	"	"	"	190	419	"	"	"	"	461	110
50-200	90	65	50	100	422	160	200	50	100	70	265	212	110	379	14	-	14	14	320	73
	100	"	"	"	447	"	"	"	"	"	"	"	"	"	"	"	"	"	358	87
	112	"	"	"	447	"	"	"	"	"	"	"	"	"	"	"	"	"	372	94
	132	"	"	"	467	"	"	"	"	"	"	"	190	419	"	"	"	"	461	116

\* Variabile a seconda del costruttore del motore



Pompa Tipo	Motore Grand.	Pompa						Piedi - Dimensioni in mm.											Peso Kg		
		DNa	DNm	a	f	h1	h2	b	m1	m2	n1	n2	n3	w	c	c1	s1	s2		l*	
50-250	100	50	65	100	447	180	225	65	125	95	320	250	110	379	16	-	14	14	358	99	
	112	"	"	"	447	"	"	"	"	"	"	"	"	379	"	"	"	"	372	106	
	132	"	"	"	467	"	"	"	"	"	"	"	190	419	"	"	"	"	461	126	
65-125	80	80	65	100	422	160	180	65	125	95	280	212	110	379	15	-	14	14	272	69	
	90	"	"	"	422	"	"	"	"	"	"	"	"	379	"	"	"	"	320	73	
	100	"	"	"	447	"	"	"	"	"	"	"	"	379	"	"	"	"	358	87	
	112	"	"	"	447	"	"	"	"	"	"	"	"	379	"	"	"	"	372	94	
	132	"	"	"	467	"	"	"	"	"	"	"	190	419	"	"	"	"	461	114	
65-160	80	80	65	100	422	160	200	65	125	95	280	212	110	379	15	-	14	14	272	70	
	90	"	"	"	422	"	"	"	"	"	"	"	"	379	"	"	"	"	320	74	
	100	"	"	"	447	"	"	"	"	"	"	"	"	379	"	"	"	"	358	88	
	112	"	"	"	447	"	"	"	"	"	"	"	"	379	"	"	"	"	372	95	
	132	"	"	"	467	"	"	"	"	"	"	"	190	419	"	"	"	"	461	115	
65-200	90	80	65	100	422	180	225	65	125	95	320	250	110	379	16	-	14	14	320	81	
	100	"	"	"	447	"	"	"	"	"	"	"	"	379	"	"	"	"	358	95	
	112	"	"	"	447	"	"	"	"	"	"	"	"	379	"	"	"	"	372	102	
	132	"	"	"	467	"	"	"	"	"	"	"	190	419	"	"	"	"	461	122	
65-250	100	80	65	100	545	200	250	80	160	120	360	280	110	500	18	-	18	14	358	130	
	112	"	"	"	545	"	"	"	"	"	"	"	"	500	"	"	"	"	372	137	
	132	"	"	"	565	"	"	"	"	"	"	"	190	520	"	"	"	"	461	161	
65-315	132	80	65	125	565	225	280	80	160	120	400	315	190	520	18	-	18	14	461	202	
	80-160	90	100	80	125	422	180	225	65	125	95	320	250	110	379	15	-	14	14	320	84
		100	"	"	"	447	"	"	"	"	"	"	"	"	379	"	"	"	"	358	98
		112	"	"	"	447	"	"	"	"	"	"	"	"	379	"	"	"	"	372	105
132	"	"	"	467	"	"	"	"	"	"	"	190	419	"	"	"	"	461	129		
80-200	100	100	80	125	545	180	250	65	125	95	345	280	110	500	16	-	14	14	358	125	
	112	"	"	"	545	"	"	"	"	"	"	"	"	500	"	"	"	"	372	132	
	132	"	"	"	565	"	"	"	"	"	"	"	190	520	"	"	"	"	461	156	
80-250	112	100	80	125	545	200	280	80	160	120	400	315	110	500	18	-	18	14	372	153	
	132	"	"	"	565	"	"	"	"	"	"	"	190	520	"	"	"	"	461	177	
100-200	100	125	100	125	545	200	280	80	160	120	360	280	110	500	16	-	18	14	358	136	
	112	"	"	"	545	"	"	"	"	"	"	"	"	500	"	"	"	"	372	143	
	132	"	"	"	565	"	"	"	"	"	"	"	190	520	"	"	"	"	461	167	
100-250	132	125	100	140	565	225	280	80	160	120	400	325	190	520	18	-	18	14	461	187	

\* Variabile a seconda del costruttore del motore