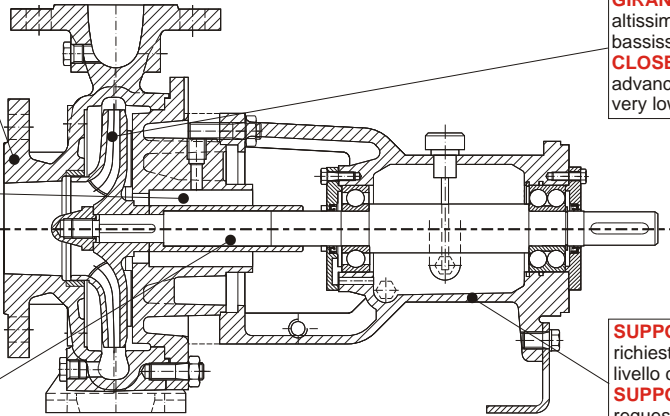


**CONNESSIONI:**  
-Flangiata con interassi secondo DIN 24256.  
**CONNECTIONS:**  
-Flanged according to DIN 24256 dimensions

**SISTEMI DI TENUTA:**  
Disponibili in almeno sei esecuzioni standard e molti altri speciali  
**SEALING SYSTEMS:**  
Suitable at least in six standardized executions, much more in special.

**ALBERO POMPA:** In AISI 316L. Protetto da camicia in sede tenuta sostituibile in caso d'usura.  
**PUMP SHAFT:** Shaft sleeve under the seal, replaceable in case of wear.



**GIRANTE CHIUSA:** Ottenuta con fusioni din altissima qualità garantisce alti rendimenti e bassissimi valori di NPSH.  
**CLOSED IMPELLER:** Manufactured using highly advanced fusion guarantees high efficiency and very low NPSH values.

**SUPPORTO:** Cuscinetti lubrificati ad olio. A richiesta supportazione heavy-duty, oliatore a livello costante, lubrificazione a grasso.  
**SUPPORT:** Oil lubricated ball bearing. On request heavy duty support, constant level lubricating system, gease lubrication

**RD 32 16A C122 3**

① ② ③ ④ ⑤ ⑥

① **Modello pompa / pump type:**  
RD Girante chiusa esecuzione asse nudo.  
Closed impeller bare shaft execution.

② **Grandezza pompa - Pump size**

③ **Riduzione girante - Impeller reduction**  
"A" diametro massimo; "B" 1° riduzione; "C" 2° riduzione ecc...  
"A" maximum diameter; "B" 1° reduction; "C" 2° reduction etc...

⑤ **Modello e materiali componenti la tenuta primaria.**  
**Primary mechanical seal materials and type.**  
Vedere sotto "TABELLA CODICI TENUTA"  
See below "SEAL CODE TABLE"

④ **Sistema di tenuta - Sealing system**

Execution **standard** : simple mechanical seal.  
Execution **B**: gland packing without flushing.  
Execution **S**: gland packing with flushing (inlet only).  
Execution **F**: gland packing with flushing (in + out).  
Execution **H**: heating or cooling chamber.  
Execution **C**: double back to back mechanical seal.  
Execution **L**: double tandem mechanical seal.  
Execution **A**: single mec.l seal with throat bushing.

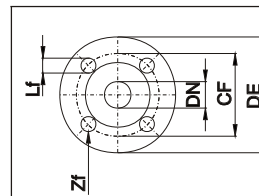
VEDERE LINK SEZIONI/SISTEMITENUTA  
SEE LINK CROSS SECTION/SEAL SYSTEMS

⑥ **Materiali di costruzione - Construction materials.**

- 3 = AISI 316  
- 99 = special materials  
-Niente=Ghisa con albero in Aisi 316

**GRANDEZZE SIZE**

Tipo pompa Pump size	32 16	32 20	40 16	40 20	50 16	50 20	50 25	65 16	65 20	65 25	65 31	80 16	80 20	80 25	80 31	100 20	100 25	100 31	125 25	125 31	
Passaggio max Max passage																					
Dnm	32		40		50			65				80				100			125		
Dna	50		65		80			100				125				125			150		

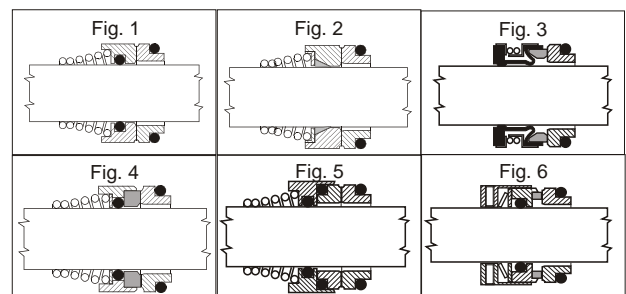


**DIMENSIONI FLANGE  
FLANGE DIMENSIONS**

DNa	32	40	50	65	80	100	125
DE	140	150	165	185	200	220	250
CF	100	110	125	145	160	180	220
Lf	18	18	18	18	18	18	18
Zf	4	4	4	4	8	8	8

**Tabella codici tenuta - Seal code table**

CODICE CODE	FIG	MATERIALE MATERIALS			
		Parte fissa Stationary part	Parte rotante Rotating part	Guarnizione Elastomer	Armatura Body
122	1	316	Graf	Viton	316
126	1	Tung	Tung	Viton	316
140	2	316	Graf	Ptfe	316
142	2	Tung	Tung	Ptfe	316
151	5	All	Graf	Epdm	316l
152	5	All	Graf	Viton	316l
153	5	Tung	Graf	Epdm	316
158	5	Sil	Tung	Viton	316
166	5	Sil	Sil	Viton	316
310	3	Sil	Sil	Epdm	316
311	3	Sil	Sil	Viton	316
400	4	Sil	Sil	Epdm	316
401	4	Sil	Sil	Viton	316
402	4	Sil	Graf	Epdm	316
403	4	Sil	Graf	Viton	316
413	6	Sil	Graf	Viton	316
414	6	Sil	Graf	Ptfe	316



**MATERIALI/MATERIALS:**

ALL: ALLUMINA/CERAMIC  
EPDM: EPDM/EPDM  
PTFE: TEFLON/PTFE  
SIL: SILICIO/SILICON CARBIDE  
TUNG: TUNGSTENO/TUNGSTEN CARBIDE  
VITON: VITON  
GRAF: GRAFITE/CARBON

COD 999= TENUTE SPECIALI.  
PER APPLICAZIONI PARTICOLARI E' POSSIBILE USARE ALTRI TIPI DI TENUTA  
PER INFORMAZIONI CONTATTATECI.